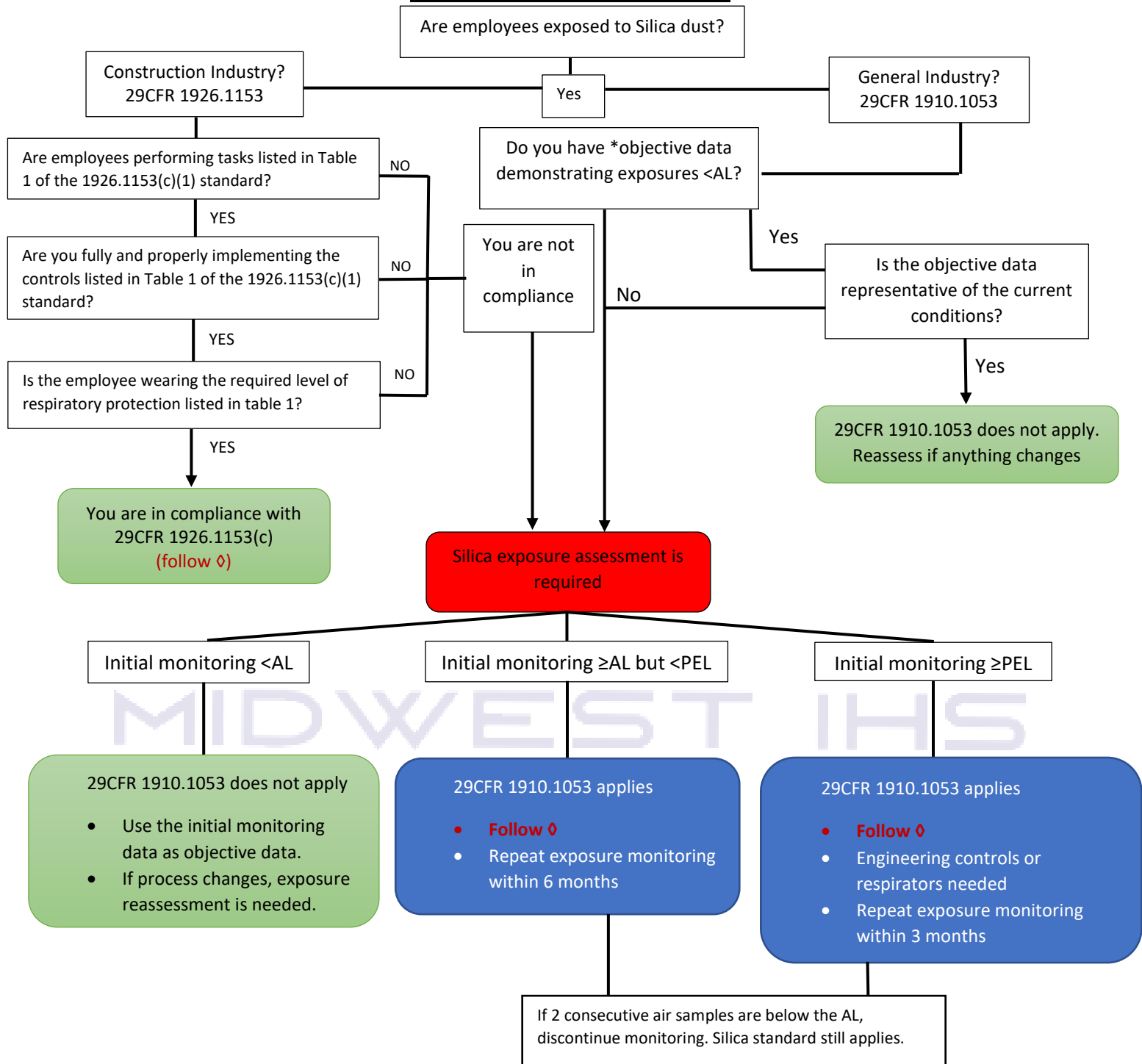


Silica Compliance flow chart



Action Level (AL) – 25µg/m³, 8hr time-weighted average (TWA)

Permissible Exposure limit (PEL) – 50µg/m³, 8hr time-weighted average (TWA)

⬠ Mandatory Actions - (when employee exposures are above the AL)

1. Establish a written silica program
2. Designate a competent person (someone in charge of the program)
3. Medical surveillance for employees in respirators >30days/year
4. Train worker on hazards of Silica exposures
5. Housekeeping measures
6. Keep records

Midwest Industrial Hygiene Services, LLC

- Chemical-Specific Worker training
- Respirable Crystalline Silica Compliance
- Sound Level Monitoring and Noise Dosimetry
- Chemical Exposure Monitoring

Contact information:

Scott.Pottorff@midwestIHS.com

Phone: 712-898-4254

*Objective Data: information, such as air monitoring data from industry wide surveys or calculations based on the composition of a substance, demonstrating employee exposure to respirable crystalline silica associated with a particular product or material or a specific process, task, or activity. The data must reflect workplace conditions closely resembling or with a higher exposure potential than the process, types of material, control methods, work practices, and environmental conditions in the employer's current operations.